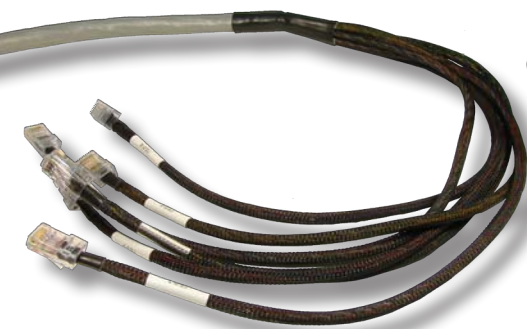


CATEGORY 5e TELCO ASSEMBLIES

Check List:

- JACKET (PVC or PLENUM)?
- SINGLE or DOUBLE ENDED?
- GENDER?
- HOOD DEGREE (90°, 120°, or 180°)?
- 90° or 120° HOOD (STANDARD or OPPOSITE EXIT)?
- LATCH TYPE (SCREW or BAIL LOCK)?
- LENGTH?
- CUSTOM IMPRINTING SHRINK OR LABELS?



6 RJ45 connectors



90° Hood Male to
90° Hood Male

MOHAWK

Cabling Excellence for Open Architecture



Male Connector
110° Hood



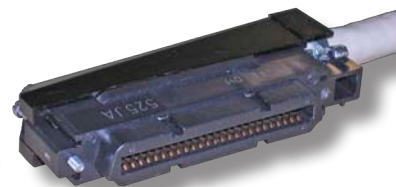
Male Connector
180° Hood



Male Connector
90° Hood



Female Connector
90° Hood



Mohawk is at the forefront of today's Datacom market with over fifty years of industry-leading excellence. MCC is proud to represent an industry leader like Mohawk cable. Mohawk employs the latest in manufacturing technology, which enables them to offer superior products for all your Copper and Fiber Cable requirements. Ask your MCC Account Manager for top quality cable assemblies made with Mohawk cable.